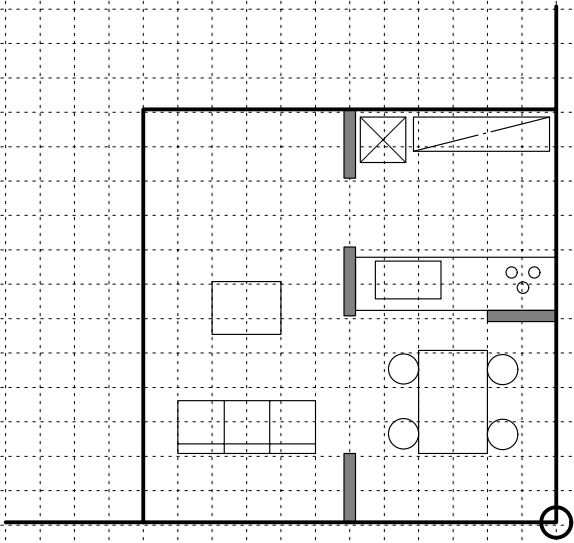
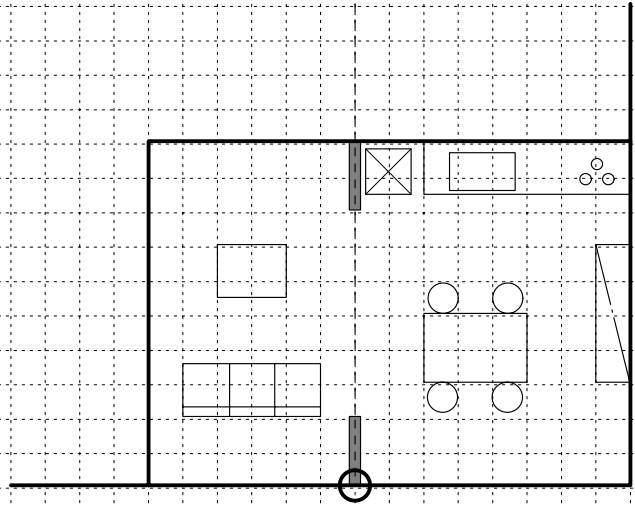


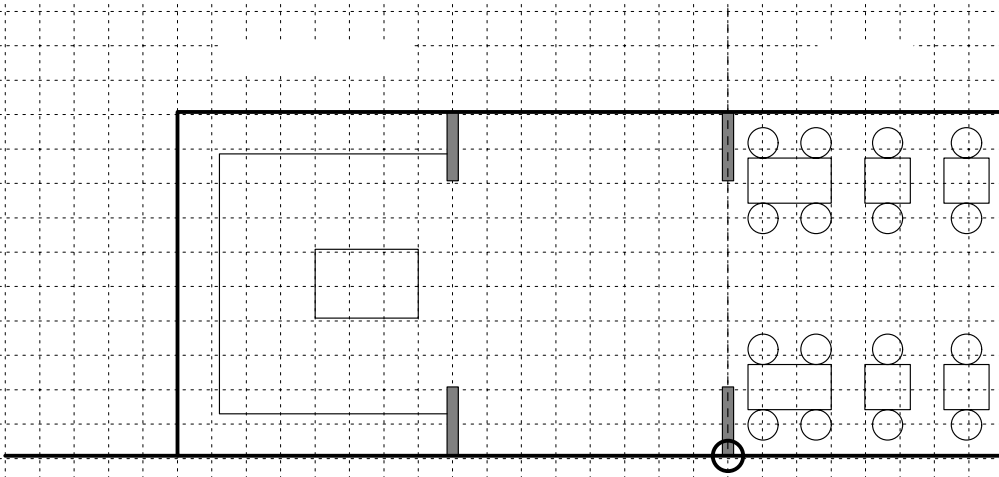
1 455mm



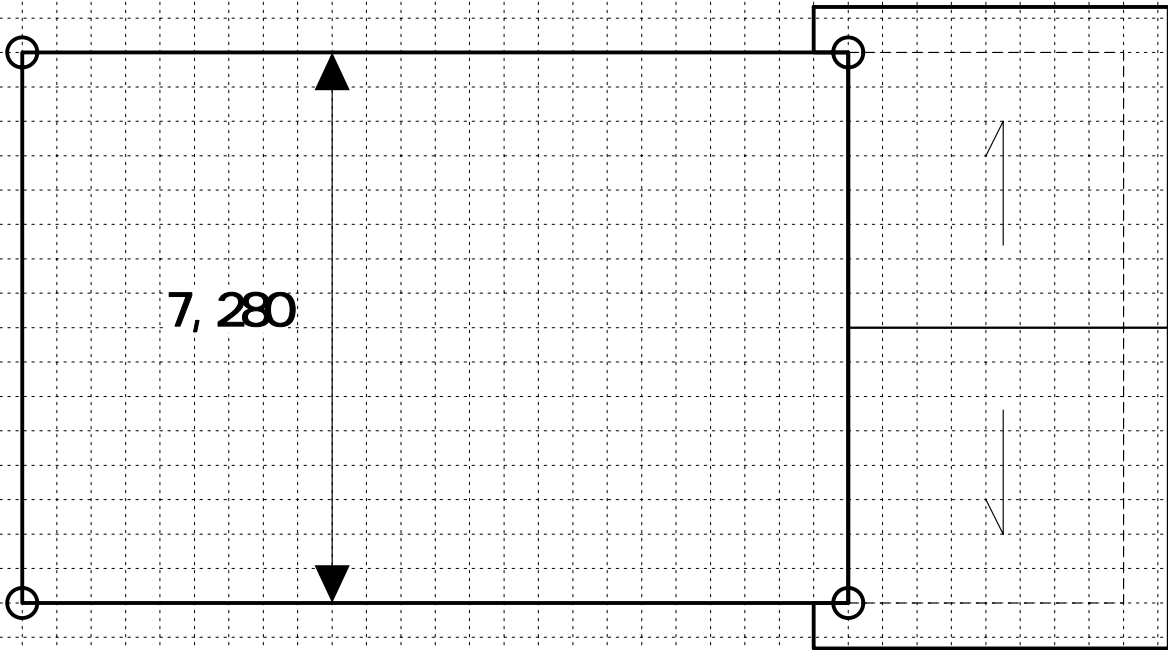
1



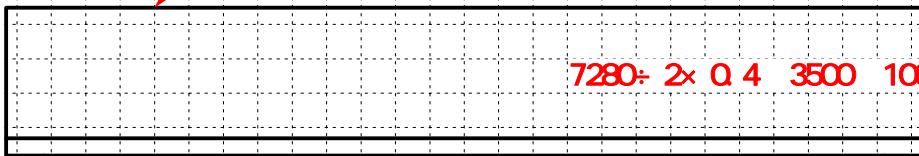
1



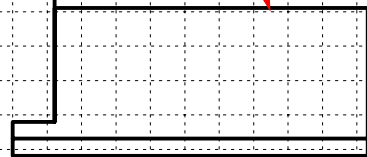
1



7280÷ 2× 0.4 6400 100 7956



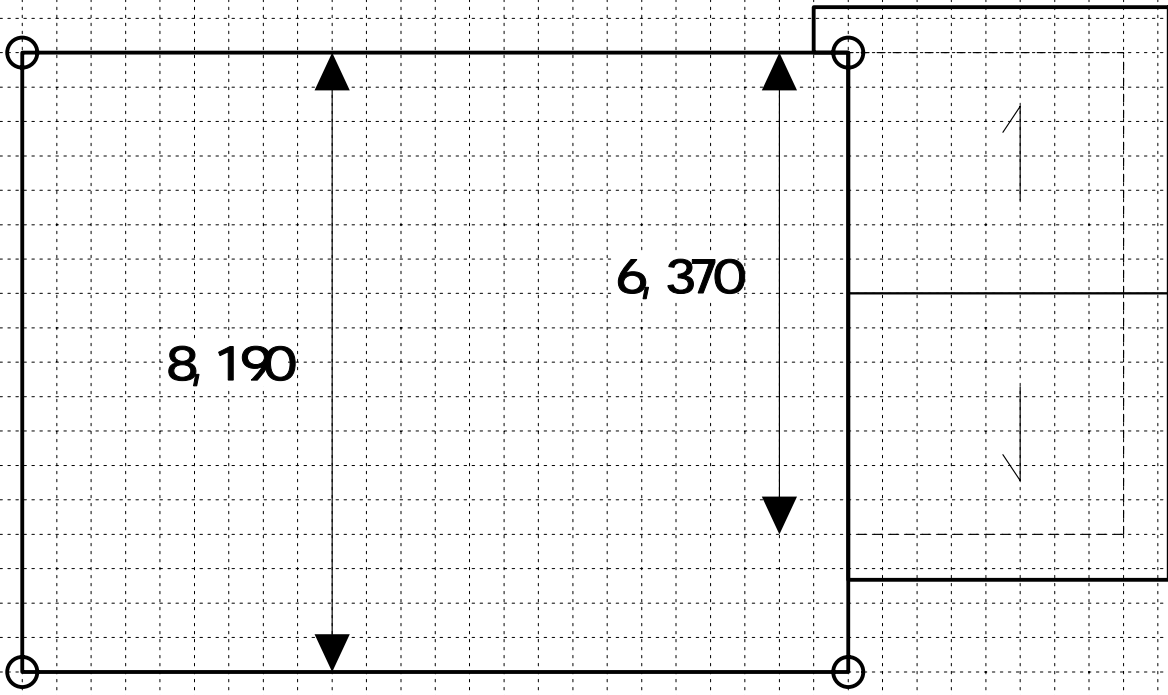
7280÷ 2× 0.4 3500 100 5056



GL



400



$$8190 \div 2 \times 0.4 = 6400 + 100 = 8138$$

$$819 \times 0.2 = 65 + 8138$$

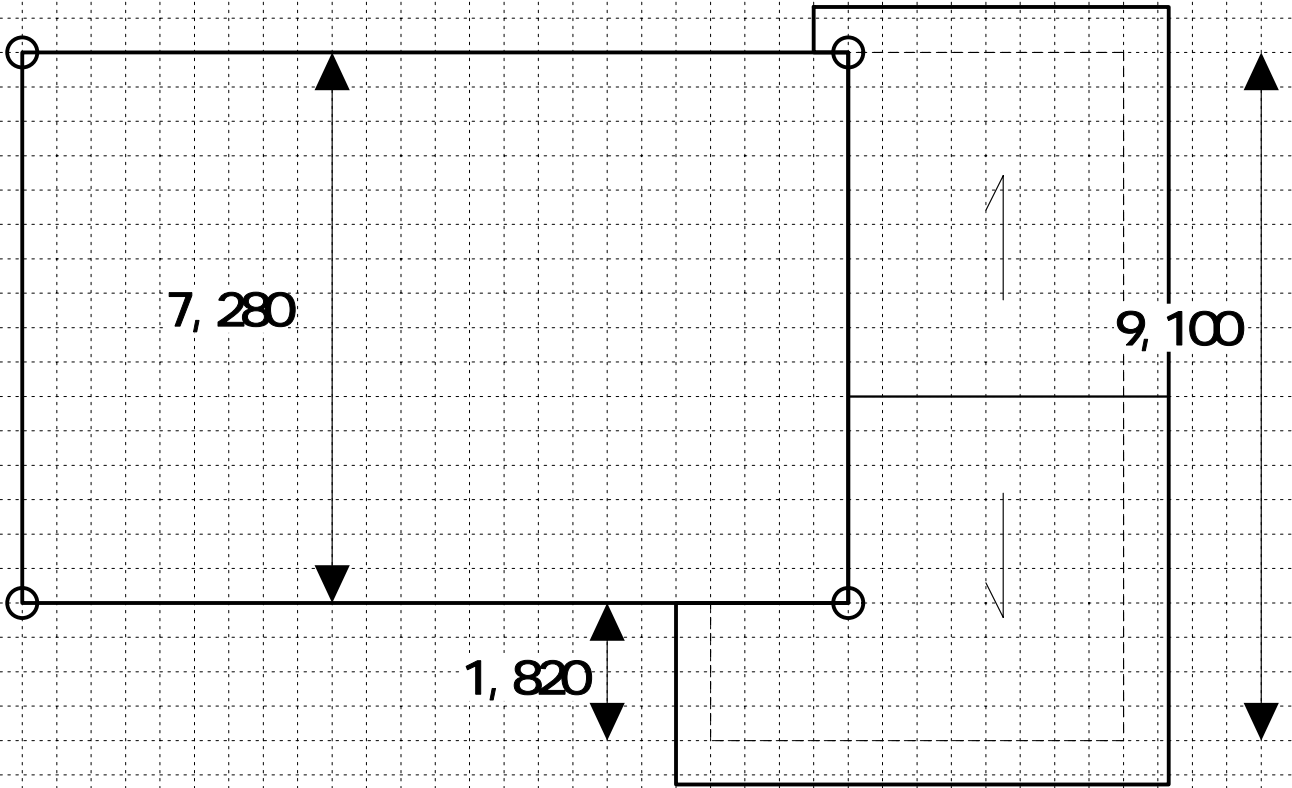
$$637 \times 0.2 = 36 + 4874$$

GL 6000

GL 3100

GL

3

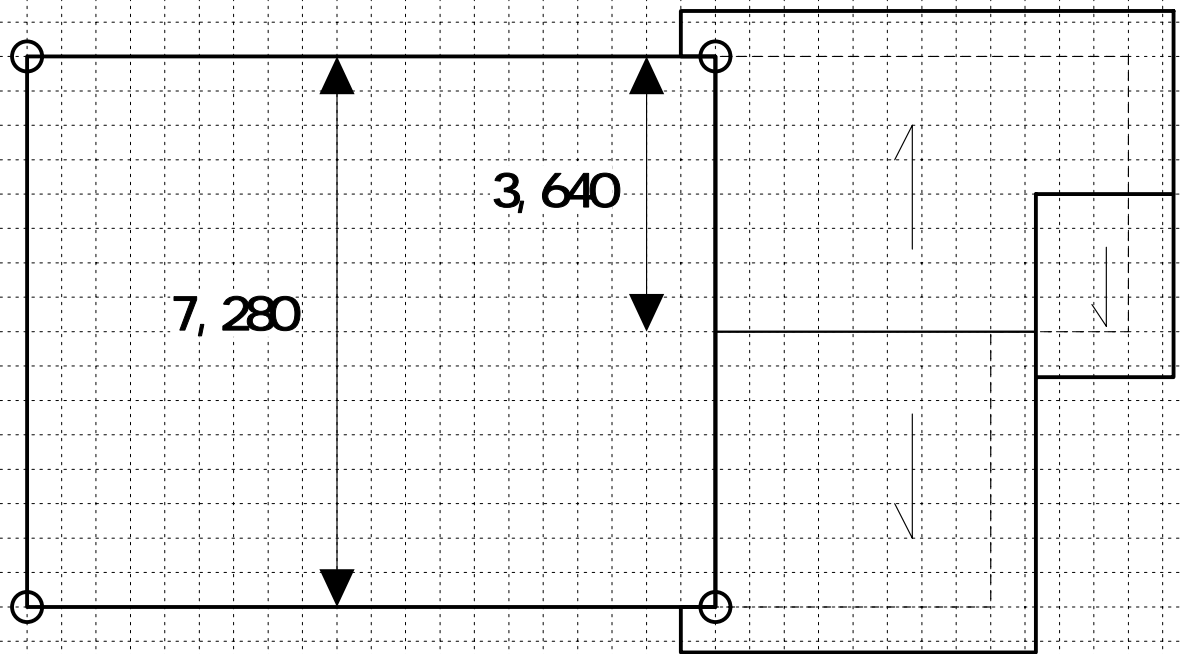


7.28 x 0.2 65 7.956

9.1 x 0.2 36 5.42

1.82 x 0.4 36 4.328

α



7.28x 0.2 3.6 5.056

3.64x 0.2 3.6 4.328

